

State of Wyoming Corner Record

(in compliance with the CORNER PERPETUATION AND FILING ACT, Wyoming Statutes, 1977, Section 36-11-101, et. seq., and the Rules and Regulations of the Board of Registration for Professional Engineers and Professional Land Surveyors)

Reverse side of this form may be used if more space is needed.

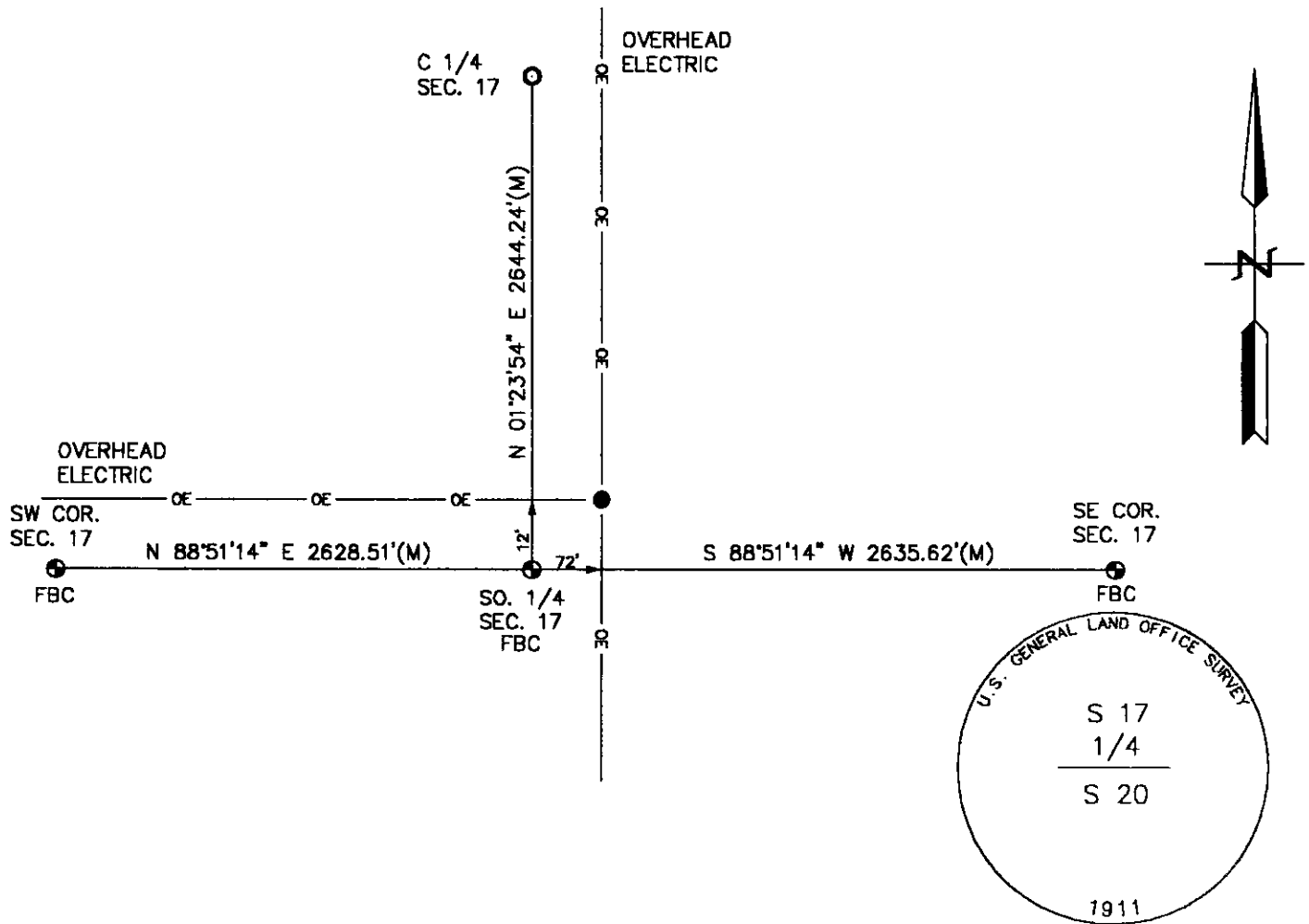
Record of original survey and citation of source of historical information (if corner is lost or obliterated). Description of corner monumentation evidence found and/or monument and accessories established to perpetuate the location of this corner. Sketch of relative location of monument, accessories, and reference points with course and distance to adjacent corner(s) (if determined in this survey). Method and rationale for reestablishment of lost or obliterated corner.

GLO RECORD: SET AN IRON POST, 3' LONG, 1" IN DIAMETER, 2 1/2' IN THE GROUND WITH GLO BRASS CAP FOR 1/4 SECTION CORNER.

MONUMENT FOUND: FOUND A 2 1/2" BRASS CAP ON A 1" PIPE BENT OVER IN A OPEN FEILD.

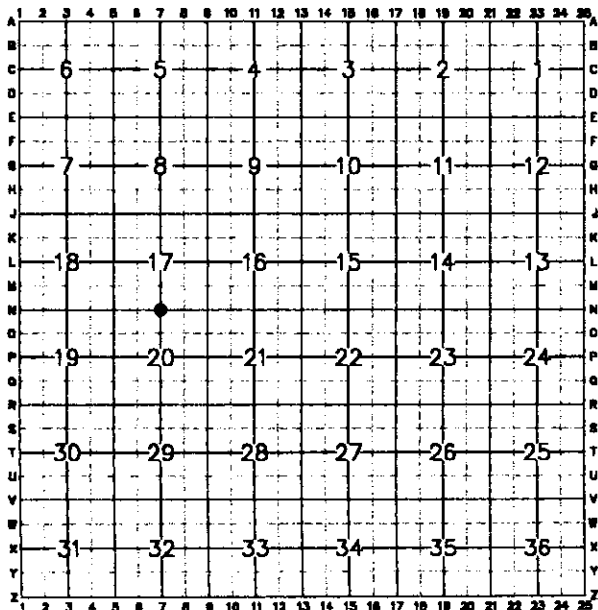
MONUMENT SET: RESET BRASS CAP AT THE POINT WHERE PIPE WENT INTO THE GROUND. MONUMENT IS PROJECTING 8" ABOVE THE GROUND.

REFERENCES: MONUMENT LIES 12' SOUTH OF A E-W POWERLINE AND 72' WEST OF A N-S POWERLINE. NO NEARBY OBJECTS TO REFERENCE TO.



Date of Field Work: 2-3-98 Office Reference: 98051

CROSS INDEX DIAGRAM



Firm/Agency, Address

STEIL SURVEYING SERVICES, LLC.

1102 WEST 19th STREET

CHEYENNE WY 82001

Telephone Number: (307) 634-7273

This corner record was prepared by me or under my direction and supervision.

SEAL & SIGNATURE

[Handwritten Signature]
12/1/00

Corner Name: SOUTH 1/4 Section: 17 T 12N R 62W; 6th P.M. Cross-Index No.: N-7
SBRPEPLS/PLSW: March 1994